

DOCKLANDS LIGHT RAILWAY - NORTH ROUTE

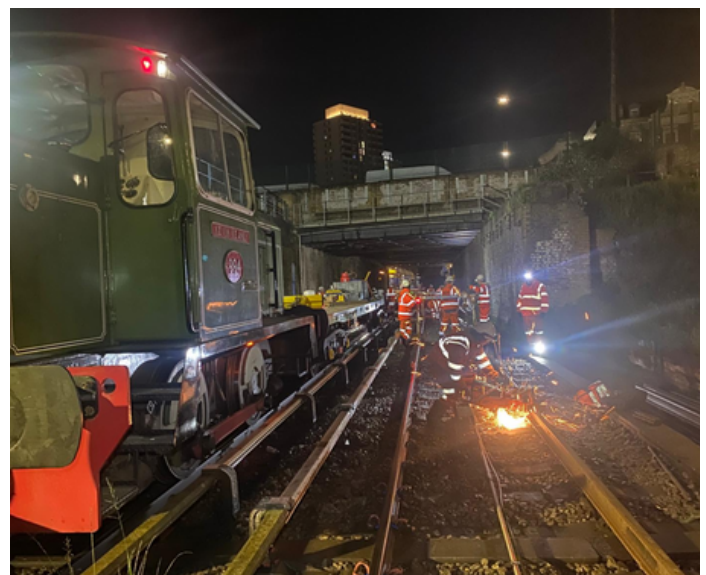
Project Title: Docklands Light Railway - North Route

Client: DLR / Principal

Contractor – SEJ And Rerailing

PROJECT DESCRIPTION

- 912m of Rerailing Achieved
- Installation of Breathers at Bow Church in Engineering Hours
- Welding programme (W1-W52), grinding, and ultrasonic testing & Visual Inspections
- Installation of clips, fishplates, Robels clamps, and Netlon fencing
- Completion of clamp inspections, conductor survey, and amber trolley runs, pre and post platform gauging surveys
- Completion of Stressing at Devon's Road, where 298m was achieved in Engineering Hours
- Completion of Stressing at Langdon Park, where 303m was achieved in Engineering Hours
- Site clearance, tool recovery, and safe handback
- Removal of redundant rail and scrap management



CHALLENGES

- Due to the proximity of residents, noise management measures were implemented, including the distribution of noise letters and reinforcement of noise control through team briefings
- Specialist S&T support within tight timeframes proved a key challenge, alongside managing late possession handovers.
- Robust Planning for the Delivery of Materials with the support of Hiab's
- Condensed working within tight timescales meant small plant and tooling calibration and compliance was a key challenge.

OUTCOMES

- 100% of rail installation and welding scope successfully delivered
- All welds ultrasonically inspected and Visually Inspected and passed
- All safety inspections (TCC, clamp, Conrail, UT, ALS/DER/BOC Stations survey's completed with no defects
- Scrap rail and debris safely removed, sites left tidy and clear
- 3992 working man-hours completed on this scheme, zero accidents or incidents recorded
- DLR confirmed acceptance following final amber trolley run

