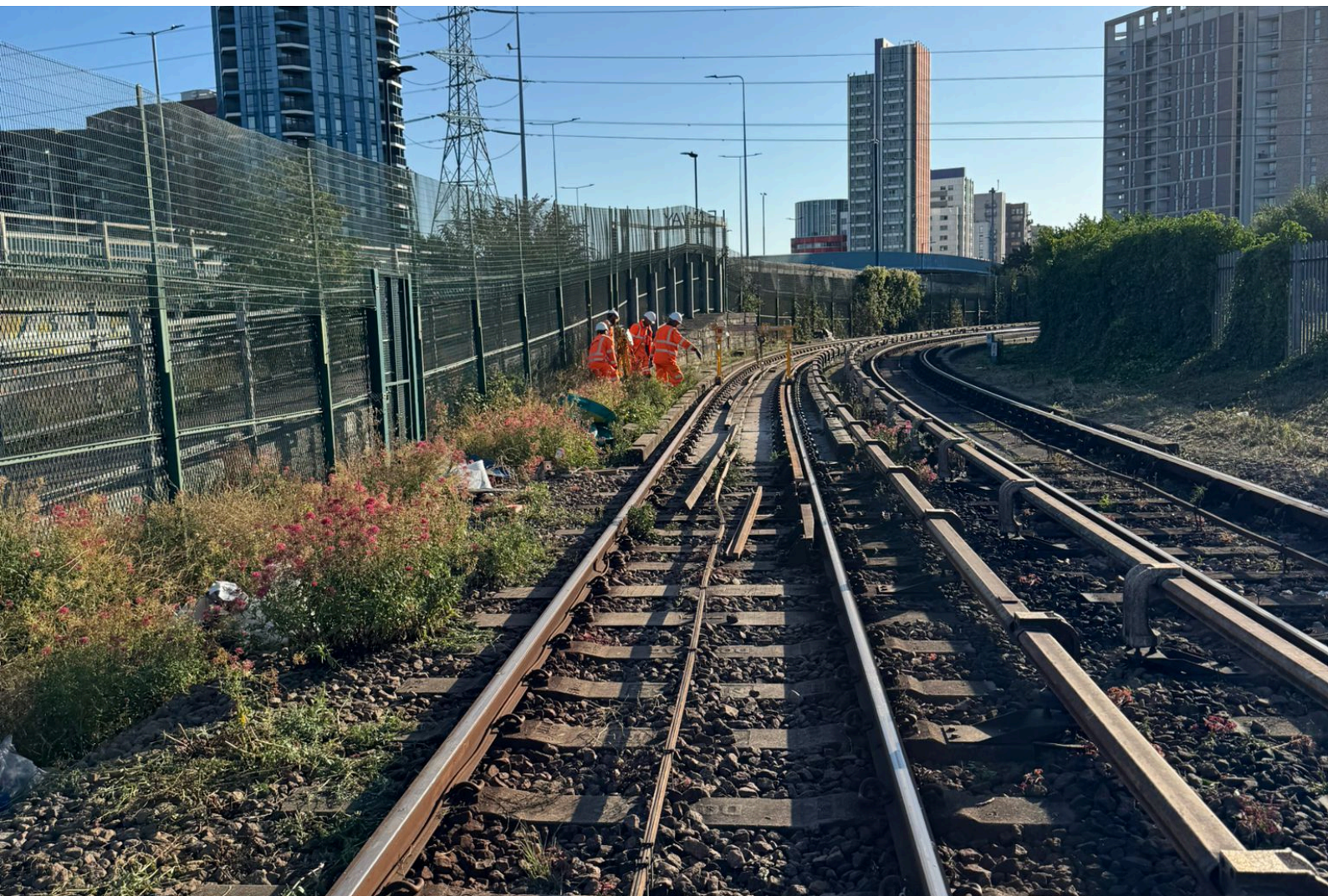


# PROJECT TITLE: CANNING TOWN CURVE

**Client: DLR / Principal Contractor – Checkrail  
and Baseplate Contract**

## SCOPE

- 177m of New Checkrail Installation Achieved
- Installation of new ALT 432 Checkrail Baseplate
- Installation of New checkrail fishplates and associated Fixings
- Amber trolley runs CAT - EAI
- Site clearance, tool recovery, and safe handback
- Removal of redundant rail and scrap management





# PROJECT TITLE: CANNING TOWN CURVE

## OUTCOMES

- 100% of rail installation and welding scope successfully delivered
- All welds ultrasonically inspected and Visually Inspected and passed
- All safety inspections TCC, CAT – EAI survey completed with no defects
- Scrap rail and debris safely removed, sites left tidy and clear
- Zero accidents or incidents recorded
- DLR confirmed acceptance following final amber trolley run

## CHALLENGES

- Due to the proximity of residents, noise management measures were implemented, including the distribution of noise letters and reinforcement of noise control through team briefings
- Specialist S&T support within tight timeframes proved a key challenge, alongside managing late possession handovers.
- Robust Planning for the Delivery of Materials with the support of Hiab's
- Precise engineering setting out was required
- Condensed working within tight timescales meant small plant and tooling calibration and compliance was a key challenge.

