



ASH CONSTRUCTION GROUP

Who We Are?



Established in 2012, ASH Construction Group is a leading privately owned railway specialist, based in Kent. We provide expert project management, construction, engineering and maintenance services across the rail sector, delivering works for Network Rail and light rail systems, including Docklands Light Railway.

ASH Construction Group provides fully competent, safety-critical labour supply services across the South East region. We specialise in the provision of skilled PTS-certified operatives and fully equipped PTS gangs to support a wide range of rail infrastructure projects.

Our workforce includes:

- PTS Track Operatives
- Skilled Groundworkers
- Civils Gangs
- Supervisors and Site Managers
- Machine Controllers and Banksmen
- Possession Support Staff

Senior Leadership Team



Tony Allday **National Labour & Plant** **Director**

With over 25 years' experience in the construction industry, Tony Allday leads ASH Construction Group's Labour Department, managing a workforce across the South East and overseeing labour support for major railway and highway civil engineering projects. He also runs the labour business supplying plant, equipment and tools to ensure efficient operational delivery, while driving improvements in processes and workforce performance. Tony has supported the successful delivery of major schemes including the North London Line (NLRIP), the Docklands Light Railway Royal Mint Street blockade, the Victoria Docks Crossrail blockade and East Kent Re-Signalling Phase 2.

Senior Leadership Team



Karl Stocker **Civils Director**

Karl brings decades of experience in the construction industry, with a proven track record of successfully managing station upgrades and extension projects across the Southeast. His expertise spans major civil engineering and building projects, including key developments such as East Grinstead, Caledonian and Barnsbury, and the recent Rainham Station upgrade. Karl's extensive industry knowledge and hands-on approach make him the ideal leader for our Civils and Brickwork packages across the UK.

Senior Leadership Team



Neil Penney **HSQE Director**

Neil Penney brings a wealth of expertise in Health, Safety, Quality, and Environmental management within the rail and construction industries. He is deeply committed to fostering a culture of safety excellence and continuous improvement across all levels of the organisation.

Neil's comprehensive understanding of regulatory compliance and risk management, coupled with this strategic leadership, has been instrumental in driving ASH Construction Group's commitment to operational safety and environmental stewardship. His proactive approach and attention to detail ensure that ASH consistently meets the highest standards, positioning the company as a leader in HSQE practices across the industry.

Core Values



Ambition drives our company to continuously strive for excellence and growth. It's about setting high goals and pushing boundaries, not just to meet the industry's standards but to exceed them, ambition is at the core of our strategic objectives. It fuels innovation, encourages proactive problem-solving, and ensures that ASH stays ahead in the highly competitive rail and construction sectors.

Safety is the non-negotiable cornerstone of our operations. Safety isn't just a priority—it's a culture. It's embedded in every decision, from planning and execution to monitoring and evaluation. This value reassures clients and employees alike that ASH Construction Group will always prioritize their well-being.

Honesty reflects the integrity and transparency that underpin all our business dealings. In an industry where trust is paramount, honesty ensures long-term relationships built on mutual respect and reliability. It's about being upfront about challenges, delivering on promises, and maintaining a level of openness that fosters trust both internally among our teams and externally with clients and stakeholders.

Our Focus

- Leading by example and speaking up to address unsafe conditions
- Having the confidence to contact management for guidance and support
- Empowering everyone to stop work, reassess risks and implement safer solutions



Safety - Our Number One Priority

We are proud of our strong health and safety record and firmly believe that safety and performance go hand in hand. Our commitment to safety is driven by visible leadership and reinforced by the positive safety behaviours demonstrated by our people, ensuring that safety is embedded in every aspect of our operations.

Our Focus

- Being acutely aware of our impact upon the environment we act to minimize any negative effects of our activity and always seek to make full use of sustainable materials and methods
- Striving to recycle all our construction waste and we have established facilities at our offices to separate waste materials for recycling in accordance with our Environmental Management Systems
- We are committed to the communities which provide our direct workforce. Whether it's clearing vegetation during project groundworks, or purchasing a new vehicle, the decisions we make have a wide range of impacts on the environment

Sustainability & Environment

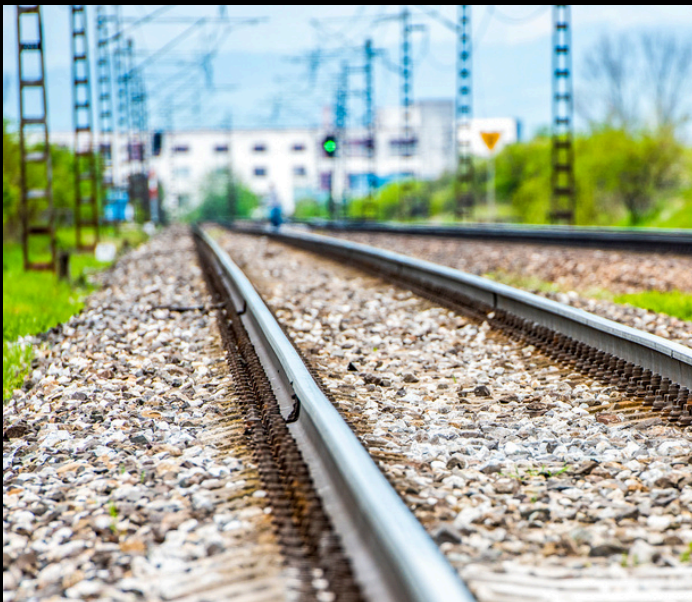


Added Value represents our approach to managing the economic, environmental and social impacts of our activities, recognising that almost everything we do has an effect on the world around us.

Sustainability is a key priority for ASH Construction Group. As a construction business, our work can leave a lasting legacy, and we take responsibility for minimising our environmental impact while delivering long-term benefits.

Our Focus

- ASH Construction Group is a quality-driven organisation with a clear mission to deliver innovative, customer-focused services across the rail and construction sectors.
- Quality and continuous improvement sit at the core of our ethos and are embedded throughout all operational areas of the business.
- We are accredited to ISO 9001 and ensure our quality objectives are fully integrated into our company culture, management systems and business planning processes.



Quality

Quality is at the core of everything we do at ASH Construction Group. We are committed to delivering the highest standards of workmanship, compliance and performance for both our clients and our workforce.

By maintaining robust processes, investing in training and continuously reviewing our delivery methods, we strive to improve in every aspect of our operations. Our focus on quality ensures safe, reliable and efficient project delivery while building long-term, trusted partnerships across the rail industry.

Accreditations

RISQS

ISO 9001 2015 – Quality Management Systems

ISO 14001 2015 – Environmental Management Systems

ISO 45001 2018 – Occupational Health and Safety

Management Systems

Construction Line Gold – Occupational Health and
Safety Management Systems

Builders Profile – Premium

Supply Chain Sustainability School – Gold Badge

CIRAS – Confidential Reporting For Safety

What we do

Permanent Way

ASH Construction Group has extensive expertise in railway construction, renewal and replacement works. Our teams bring over 40 years of combined experience delivering projects across high-speed Network Rail infrastructure, light rail systems such as the DLR, London Overground commuter routes, freight lines, depots, sidings and private heritage locations.

We deliver all aspects of Permanent Way and third rail ETE/ETM projects, ranging from component renewals to complex, fully mechanised on-track machine operations delivered to the highest technical standards.

- Plain line
- Switches and crossings
- Track slab construction
- Track realignment schemes
- Re-sleepering/re-timbering
- Cable management sleepers
- CRE & Technical advice
- Rail Transposition & Re-railing
- IBJ Installation and Recovery
- Stressing & Tamping
- Track Hand back L4 up to 125mph
- Critical Rail Temperature (CRT) & Track Monitoring
- Management of Temporary Speed Restrictions



What we do

Rail Civils



- Platform Reconstruction
- Level Crossings
- Under Track UTX and Road Crossings
- Tactile & Coping stone installation and re-alignment
- Installation of cable troughs/routes
- Drainage
- Brickwork and Masonry
- Industrial Painting and Blasting (ICATS)
- Building Decorating and repairs
- Diamond Core Drilling and Grouting



What we do

Labour Supply

- Engineering and Technical
- Site Engineers/Managers
- Civil Engineers
- Track Hand Back Engineers
- Stressing Engineers
- Planning
- CRE Role
- Supervisors

- TRADESMEN
- Bricklayers
- Shuttering Joiners/Chippies
- Steel Fixers
- Concrete finishers

SAFETY CRITICAL

- PTS
- ETE/ETM Installers
- PTS Track induction Tr00
- COSS
- Lookout
- Protection Controllers
- Level Crossing Attendants
- Strapman
- Hand Signaller
- Machine Controller
- Crane Controller
- Engineering Supervisor

MACHINE AND PLANT OPERATIVES

- Excavator
- Forward Tipping Dumper
- Telehandler



Testimonials



"Mission Accomplished: Overcoming Challenges at One of London's Most Strategic Stations!"

The Re-Railing works at Bank Station/Tunnel were critical and had a significant impact to operational prominence at the DLR.

Encumbered with safety, logistical, engineering and deliverability concerns ASH worked closely with the DLR team in planning the works.

Their flexible and open approach in an evolving project allowed us to make sure we were able to deliver 1600m re-railing and drop 96 welds whilst Bank Station remained operational during the busy Christmas period.

We look forward working with ASH in the future and developing our working relationships further."

"We appreciate the effort and professionalism shown by the ASH team!"

We were very pleased with the overall outcome of the project delivered by ASH Construction Group. The standard of workmanship and the commitment shown throughout the job were excellent. Their team demonstrated strong skills, a positive attitude, and a proactive approach from start to finish.

All staff were clearly well-prepared and worked efficiently on-site. While the crew performed well, we believe that offering some additional training could further strengthen their knowledge and confidence moving forward.

Overall, a job well done we appreciate the effort and professionalism shown by the ASH team. "

"Thoroughly impressed! The overall project went extremely well, and as a client, we were completely satisfied. The quality of work and timely delivery were exceptional, with proactive and dedicated members across the team. ASH Construction Group's Civils Team understood the requirements very well and used very experienced and trained staff.

We were particularly impressed by the high standard of workmanship and the team's ability to deliver works seamlessly around the track renewal activities. My team at Tonbridge was thoroughly impressed, and we look forward to working with the ASH Construction Civils Team again in the future."

News

At ASH Construction, we are committed to remaining updated with Social Value initiatives, creating a happy, safe and supportive environment for our employees and the communities we work within. Throughout the year, we actively deliver environmental and social value activities that promote wellbeing, sustainability and positive community impact.

To find out more about the initiatives and projects we're involved in, follow our journey across our social media channels.



WOMEN IN RAIL
The First Networking Event

ASH were proud to have attended the Women in Rail Event, meeting amazing women and building meaningful connections within the industry.



Mental Health Walk

As part of our Mental Health Strategy for this year, we will be holding a monthly Mental Health Walk, followed by a coffee and chat.



On Track with ASH



FRUIT FRIDAY

As part of our ongoing wellbeing initiatives, we introduced Fruit Friday to give everyone a healthy boost during the winter months. With darker days often impacting energy levels and Vitamin D intake, fresh fruit was provided to help keep our teams feeling energised and supported at work.



On Track with ASH



JOIN THE BEACH CLEANUP

Help us keep our beaches clean and beautiful. Join our team for a beach cleanup on Friday 12th November. We'll provide everything you need to get started. Sign up now!



CHRISTMAS TOY DRIVE 2025

FOR EVERY CHILD I WISH



CHRISTMAS TOY DRIVE 2025

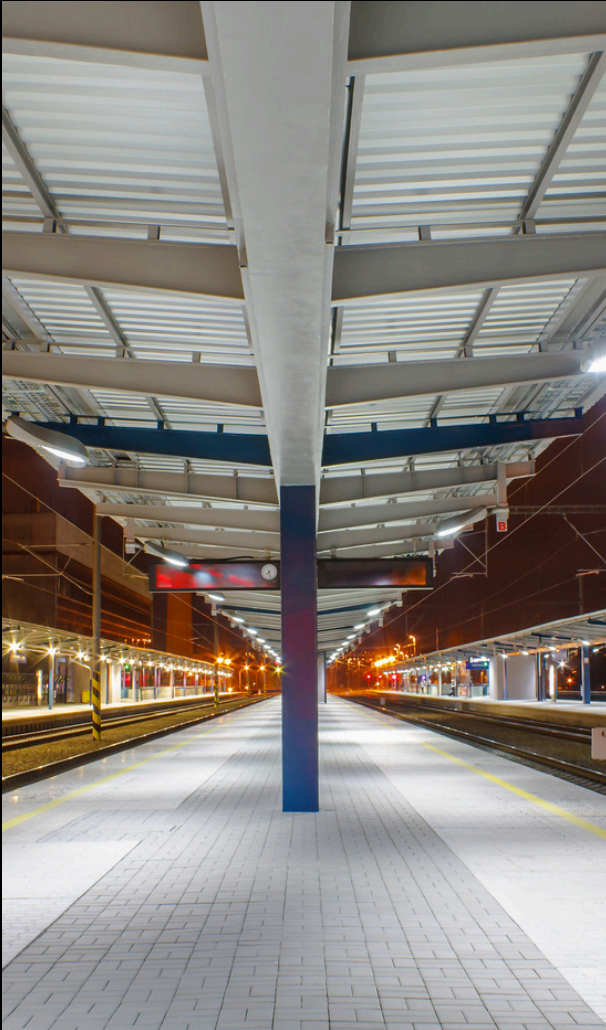
FOR EVERY CHILD I WISH



CHRISTMAS TOY DRIVE 2025

FOR EVERY CHILD I WISH





Where to find us

Our Location

HEAD OFFICE

Unit 9 The Oaks

Manston Business Park

Ramsgate

Kent

CT12 5FN

01843 593268

Linked In: @ASHConstructionGroup

Instagram: @ashconstructiongroup

Facebook: @ASHConstructionGroup

We can be contacted seven - days a week, please call
or email for further information



"To inspire future generations by keeping the world on track"