



**ASH**  
CONSTRUCTION  
GROUP

# WHO WE ARE



Established in 2013, ASH Construction Group are a leading privately-owned, Railway Specialist with offices in Kent, London and Birmingham.

We deliver expert project management, construction, engineering and maintenance solutions for Network Rail and light Rail systems such as Docklands Light Railway.

Our focus is delivering a safe, sustainable service with an open, collaborative approach, enabling us to reliably deliver projects Nationwide.

We are supported by a team of highly experienced staff specialising in Rail schemes alongside an exceptional Building and civil engineering capability.



# OUR SENIOR TEAM



**Steve Horrigan**

**Managing Director**

Steve has extensive rail systems knowledge gained from over 25 years in the industry. He is passionate about people development, operational safety, and the delivery of quality products.



**Tony Allday**

**National Labour & Recruitment Director**

Tony has over 20 years experience in construction, a highly organised professional overseeing the Labour Department, supplying operatives, plant, equipment, powered tools, and more..



**Karl Stocker**

**Civils Project Director**

Karl brings over 20 years of construction experience, with 15 years focused on managing station upgrades and extensions across the southeast. His attention to detail and hands-on approach make him an ideal leader for our civils department.



**Sam Breach**

**Senior Project Manager**

Sam specialises in Permanent Way, with a proven track record of delivering complex projects for Network Rail and major clients. His expertise in track renewals and infrastructure upgrades ensures timely, on-budget, and high-quality results



**Neil Penney**

**HSQE Director**

Neil brings extensive expertise in Health, Safety, Quality, and Environmental management. His deep knowledge of compliance and risk management, along with strategic leadership, has been key to advancing ASH Construction Group's commitment to safety..



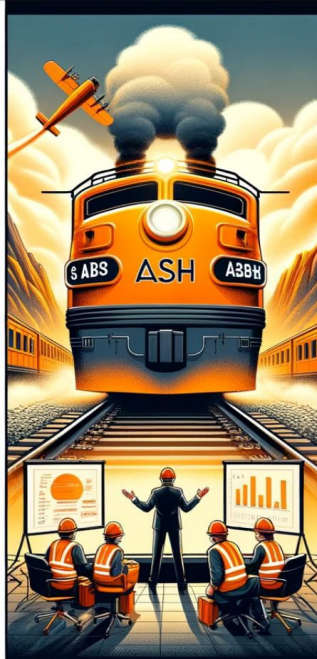


# CORE VALUES

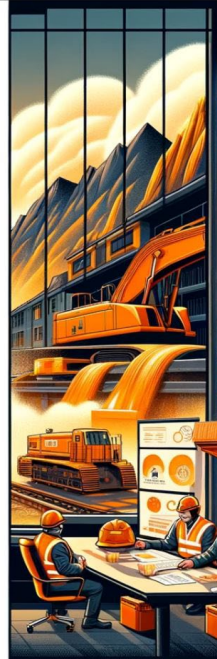
***“At the heart of our Business”***



**AMBITION**



**SAFETY**



**HONESTY**

## **Ambition:**

Ambition drives our company to continuously strive for excellence and growth. It's about setting high goals and pushing boundaries, not just to meet the industry's standards but to exceed them, ambition is at the core of our strategic objectives. It fuels innovation, encourages proactive problem-solving, and ensures that ASH stays ahead in the highly competitive rail and construction sectors.

## **Safety:**

Safety is the non-negotiable cornerstone of our operations. Safety isn't just a priority—it's a culture. It's embedded in every decision, from planning and execution to monitoring and evaluation. This value reassures clients and employees alike that ASH Construction Group will always prioritize their well-being.

## **Honesty:**

Honesty reflects the integrity and transparency that underpin all our business dealings. In an industry where trust is paramount, honesty ensures long-term relationships built on mutual respect and reliability. It's about being upfront about challenges, delivering on promises, and maintaining a level of openness that fosters trust both internally among our teams and externally with clients and stakeholders.





## SAFETY - OUR NUMBER ONE PRIORITY

We are proud of our excellent Health and Safety record and we believe in the principle that safety and performance go hand in hand. Our absolute commitment to safety shows through management leadership and the positive behavioural safety attitudes demonstrated by our people, showing that safety is integral to everything that we do

- ✓ **Leading by example and speaking up about unsafe conditions**
- ✓ **Being free to contact our management team for support**
- ✓ **To Stop work, reassess the situation and propose safer solutions**
- ✓ **Challenge each other when we feel something isn't right**



Our health & safety management accreditations

- ✓ **RISQS**
- ✓ **ISO 45001**
- ✓ **Construction Line Gold**
- ✓ **CHAS** CONSTRUCTION GROUP

**SAFETY FIRST**



## SUSTAINABILITY & ENVIRONMENT

Added Value is our approach to managing our economic, environmental and social impacts as almost everything we do has an impact on the environment.

Sustainability simply has to be a major focus for us because in construction we can have a lasting effect on the world in which we live.

We recognise the impact we have on the local economy and on those communities and as a forward-thinking organisation we are increasingly setting the bar higher by:

- ✓ **Being acutely aware of our impact upon the environment we act to minimize any negative effects of our activity and always seek to make full use of sustainable materials and methods**
- ✓ **Striving to recycle all our construction waste and we have established facilities at our offices to separate waste materials for recycling in accordance with our Environmental Management Systems**
- ✓ **We are committed to the communities which provide our direct workforce. Whether it's clearing vegetation during project groundworks, or purchasing a new vehicle, the decisions we make have a wide range of impacts on the environment**

Accredited to ISO 14001 and having launched our 25 by 25 strategy, aiming to reduce energy consumption by 25% by 2025





## QUALITY

ASH Construction Group is a quality driven organisation with a corporate mission to provide innovative services and Customer Focus in the Rail & construction industry.

Quality and continuous improvement in all areas of service are central to our company ethos which is reflected in all operational areas.

ASH Construction Group are accredited to ISO 9001 and ensure that our objectives are embedded within our company culture and business plans across our management team

Our policy is to provide a level of service and focus that exceeds our customers' expectations and delivers complete customer satisfaction ensuring we follow precise standards and methodologies to deliver our work.



# ACCREDITATIONS

- ✓ **RISQS-** 5 Star Audited
- ✓ **ISO 9001 2015-** Quality Management Systems
- ✓ **ISO 14001 2015-** Environmental Management Systems
- ✓ **ISO 45001 2018-** Occupational Health And Safety Management Systems
- ✓ **Construction Line Gold-** Occupational Health And Safety Management Systems
- ✓ **CHAS-** Contractors Health And Safety Assessment Scheme
- ✓ **ICATS-** Industrial Coating Applicators Scheme
- ✓ **Builders Profile-** Premium
- ✓ **Supply Chain Sustainability School-** Bronze Badge
- ✓ **CIRAS-** Confidential Reporting For Safety





# WHAT WE DO



# WHAT WE DO



## PERMANENT WAY

At ASH Construction Group we have comprehensive knowledge of Railway Construction, renewal and replacement techniques. Our teams have over 40 years of experience on high-speed main Network Rail lines, Light Railways such as DLR, London overground commuter routes, freight lines, depots, sidings and private Heritage locations

We can undertake all aspects of Permanent Way, 3rd Rail ETE/ETM projects; from component exchange to the highest technical levels of mechanised on-track machine construction




[www.ash -cg.com](http://www.ash-cg.com)



# WHAT WE DO

## PERMANENT WAY

- 
- Plain line
  - Switches and crossings
  - Track slab construction
  - Track realignment schemes
  - Re-sleepering/re-timbering
  - Cable management sleepers
  - CRE & Technical advice
  - Rail Transposition & Re-railing
  - IBJ Installation and Recovery
  - Stressing & Tamping
  - Track Hand back L4 up to 125mph
  - Critical Rail Temperature (CRT) & Track Monitoring
  - Management of Temporary Speed Restrictions





# WHAT WE DO



## CONDUCTOR RAIL ELECTRIC TRACK EQUIPMENT (ETE/ETM)

Installations/Renewals/Maintenance

ETE Cable and Equipment Installation

DC Lug Replacement

Negative Bonding

High & Low Speed Ramp Formation

Pre-Curving Rails



[www.ash-cg.com](http://www.ash-cg.com)



# WHAT WE DO



## CONDUCTOR RAIL

### ELECTRIC TRACK EQUIPMENT (ETE/ETM)

Conductor rail shrouding

Conductor Rail Guard boarding

Installation of new and re-instatement of insulator

Insulator & Wear Gauge Inspections

Provision of HV Assessments & HV Comp

Rail Fish Plate Jointing



[www.ash-cg.com](http://www.ash-cg.com)



# WHAT WE DO

## RAIL CIVILS

Platform Reconstruction

Level Crossings

Under Track UTX and Road Crossings

Tactile & Copping stone installation and re-alignment

Installation of cable troughs/routes

Drainage

Brickwork and Masonry

Industrial Painting and Blasting (ICATS)

Building Decorating and repairs

Diamond Core Drilling and Grouting





# WHAT WE DO

## LABOUR SUPPLY

### WE PROVIDE

#### ENGINEERING AND TECHNICAL

- Site Engineers/Managers
- Civil Engineers
- Track Hand Back Engineers
- Stressing Engineers
- Planning
- CRE Role
- Supervisors

#### TRADESMEN

- Bricklayers
- Shuttering Joiners/Chippies
- Steel Fixers
- Concrete finishers

#### MACHINE AND PLANT OPERATIVES

- Excavator
- Forward Tipping Dumper
- Telehandler

#### SAFETY CRITICAL

- PTS
- ETE/ETM Installers
- PTS Track induction Tr00
- COSS
- Lookout
- Protection Controllers
- Level Crossing Attendants
- Strapman
- Hand Signaller
- Machine Controller
- Crane Controller
- Engineering Supervisor





# OUR LOCATIONS

We can be contacted seven-days a week, please call or email  
for further information



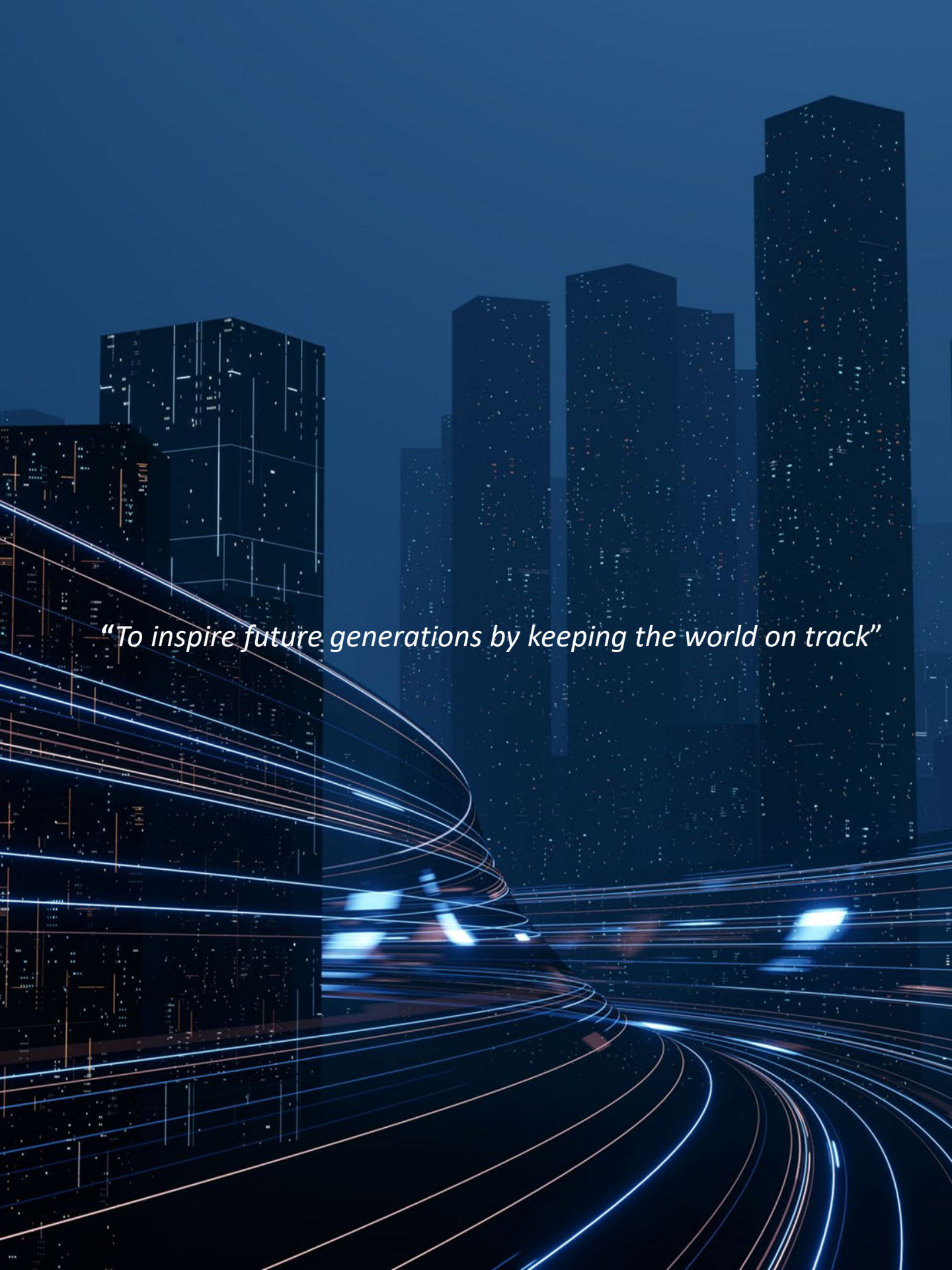
## Head office

Unit B6, Chaucer Business Park, Watery Lane  
Sevenoaks, TN15 6QY  
01883 598050

## Accounts

Unit 9 The Oaks  
Manston Business  
Park Ramsgate  
Kent CT12 5FN  
01843 593268





*“To inspire future generations by keeping the world on track”*